



THE TAX INSTITUTE

*A UNIQUE EVENT FOR
WOMEN ASPIRING TO
LEAD, LEARN AND GROW
IN A CHANGING
PROFESSION*

Women in Tax National Congress 2022

The Great Awakening

18 February 2022 | Crown Sydney & Online

6.5 CPD hours



Women in Tax

[Register now](#)



Women in Tax

‘The Great Awakening’

Make change that matters

Stressed. Disconnected. Burnout. The effects of COVID-19 have been far-reaching, difficult and often unpredictable. But when you have the right tools, adversity can be the catalyst for growth and discovery.

At our Women in Tax Congress in February 2022, you can tap into the insights and experience of the change-makers, top thinkers and thought leaders. Learn the techniques, strategies and tools used by the experts and how you and your team can implement them. Connect with colleagues, share your story and walk away inspired to make positive change.



Welcome from the Vice President



Jerome Tse
Vice President of The Tax Institute

We are setting a new standard for success.

Increasingly, we choose balance over burnout. Positive mindset over disconnect. Action over anxiety. And we're looking to leaders in tax who embrace new perspectives and unique experiences – extraordinary leaders, for extraordinary times.

Flexibility. Collaboration. Inclusivity. These are the values set to define your professional life in a changing world. These are the values we must display and live by to encourage the next generation of leaders in tax to rise up.

Are you ready to apply them?

Join us at the 2022 Women in Tax National Congress as we explore the ideas and abilities that will drive your career forward as a role model for the industry.

Our expert speakers will span topics from making remote working work for you, to fostering wellbeing and diversity in the workplace. You'll walk away with the tools and skills to recognise, nurture and be an extraordinary leader.

A stylized, handwritten signature in white ink, appearing to read 'Jerome'.

“True leadership stems from individuality that is honestly and sometimes imperfectly expressed ... Leaders should strive for authenticity over perfection.”

Sheryl Sandberg, COO of Facebook and Founder of LeanIn.org



About the program

Seven interactive and practical sessions showcasing Australia's most influential leaders, who will share their experiences and insights to help you make change that matters.



Women in Tax National Congress 2022



An inspiring event for women in tax, accounting and law

Join us



Leaders and mentors that inspire, support and empower women in the profession.



Aspiring leaders that want to make a positive difference.



Advocates that support diversity and empowering women in the workplace.





Our speakers



Ian Bennett

PwC

Ian Bennett, Partner, Deals PwC Australia leads the PwC Deals Modelling business. He's a proud accountant, spreadsheet fan and global financial modelling expert.

Ian has been active in PwC D&I at leadership levels for many years, and for three years he was the Diversity & Inclusion Business Leader for the Deals business at PwC. A proud and outspoken LGBTI Ally, Ian sits on the Leadership team of Shine@PwC. Five years ago Ian worked with Pride in Diversity to set up Australia's Executive LGBTI Allies forum to create and activate senior role-models in organisations around Australia. Meeting four times per year, and attended by over 100 senior executives from major corporates and government, the Executive Allies are passionate about sharing ideas and creating more inclusive cultures in their organisations. In 2019 Ian was awarded the Sally Webster Ally award at Pride in Diversity's AWEI Awards.



Dr Maria Bhatti

Western Sydney University

Dr Maria Bhatti is a lecturer with the School of Law at the Western Sydney University.

She completed her bachelor of laws and master of laws from the University of Melbourne. Her masters thesis focussed on the taxation implications of Islamic finance for which she received a prestigious scholarship by the National Australia Bank. She completed her PhD from Monash University, and her thesis examined the intersection of religious and secular law through the lens of international commercial arbitration.

Prior to completing her PhD, she worked as a family lawyer in Melbourne. She has previously taught 'Equity and Trusts' at Monash University and University of Technology Sydney in the department of law.

Maria is the author of Islamic Law and International Commercial Arbitration published by Routledge in 2018. Her research interests include international commercial arbitration, corporate governance, equity and trusts, Islamic law, dispute resolution and business law.



Nicole Bradley

Grant Thornton

Nicole is the National Managing Partner of Taxation at Grant Thornton. Previous Leadership roles have included Managing Partner of the Sydney office, Director on Grant Thornton Limited's Board of Directors and Head of Audit in Sydney. Nicole is still a practicing audit partner with a client base while leading the National Tax practice for Grant Thornton Australia.

Nicole is passionate about encouraging, mentoring and growing diverse talent and leading the practices through change. Nicole has an extensive track record of increasing the diversity at Grant Thornton and fostering teams to create a culture of sustainability and growth.



Melanie Earl

Deloitte

Melanie is a Partner at Deloitte with over 20 years' experience specialising in corporate and international tax and mergers and acquisitions. Melanie has worked for Deloitte Sydney and Deloitte London and has advised on numerous transactions in the Australian, Asia-Pacific and European regions. Melanie's current client base comprises Australian and foreign based multinational corporations and she advises them on all major areas of Australian tax including international tax structuring and advisory as well as tax reporting and compliance. Melanie has worked flexibly for the past 9 years of her career allowing her more time to raise her family.

Speaker profiles continued



Kirsten Fish, CTA

Australian Taxation Office

Kirsten Fish is ATO Second Commissioner for Law Design and Practice. In this role, Kirsten has overall responsibility for the ATO's law practice, including law interpretation, public advice and guidance, independent dispute prevention and resolution, and the ATO's role in policy and law design.

Kirsten joined the ATO in 2014 and the ATO's Chief Tax Counsel from 2015, one of the highest legal authorities within the ATO, leading the Tax Counsel Network and providing technical leadership in relation to significant tax issues, cases and rulings. Kirsten was acting Second Commissioner for 12 months before being formally appointed to the role in October 2021.

Prior to joining the ATO, Kirsten was a tax Partner at Clayton Utz with a focus on the financial services industry and providing finance and investment transaction advice.

Kirsten holds a Bachelor of Commerce (Accounting), Bachelor of Laws (First Class Honours) and Masters of Law (Tax).e (Accounting), Bachelor of Laws (First Class Honours) and Masters of Law (Tax).



Jane Holliday

Clayton Utz | CareerGrow.Coach

Career navigation is a lifelong process, not a one-off event. Jane Holliday has more than 10 years' experience in supporting people through this reflective and liberating process - as a career coach, facilitator and mentor. Jane helps people to identify what's important to them and commit to action - and in turn learn how to self-manage their careers.

Jane is the co-founder of the Career Retreat, a short program that gathers together a small group of like-minded people who want to re-connect with their existing career or make the right changes. Jane is also a Learning & Organisational Development Manager at Clayton Utz, supporting the development of professionals of all stripes and levels. Jane's first career was 8 years as a mergers & acquisitions lawyer at Mallesons Sydney and Freshfields London, before navigating a career shift to follow her keen commitment to people development. She's never been a tax lawyer but recalls Principles of Taxation at UNSW with fondness.



Robyn Howard

Johnson Winter & Slattery

Robyn is an experienced Human Resources professional who brings an energetic and commercial approach to her work. Robyn's experience has been gained in both the UK and Australia, covering the full HR suite including working for recruitment and training agencies as well as leading people initiatives within the professional services environment. For the last decade, her focus has been on law firms.

As the People & Development Director at JWS, Robyn is responsible for the attraction, development and retention of the firm's professional staff. In addition, she looks after talent development programs, recruitment and selection, talent management, performance coaching, performance management and remuneration. Robyn is a member of the firm's Executive Team and works closely with the partner representatives on the firm's Management Committee.

“

Invaluable investment in my own professional development and an excellent opportunity to network with inspirational presenters.”

*Rae NiCorraidh, CTA
Knowledge Shop
Women in Tax National Congress
Organising Committee*

“

I'm always excited by the amazing line-up of speakers at a Women in Tax National Congress. They always excite and motivate me to take on new ideas and concepts and implement them.”

*Mariana von Lucken, CTA
HLB Mann Judd
Women in Tax National Congress
Organising Committee*

Speaker profiles continued



Suzy Jacobs

Cognitive Innovation

Suzy Jacobs is our 2022 congress MC and keynote speaker.

Her program, The Fundamentals of Expansive Thinking equips executives, owners and entrepreneurs to autonomously and efficiently increase their capacity to generate extraordinary results across every facet of life, regardless of conditions.

Suzy is an educator and humanitarian who believes expansive thinking holds the answer to the greatest challenges faced by leaders today.



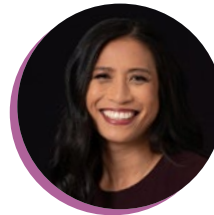
Vicky Jones

The Element Coach

In 2013 Vicky swapped her career of 15 years in the media industry in London and Sydney to follow her passion to inspire and empower women to be the best they can be. She does this through coaching, facilitation and keynote speaking for large private and public sector clients.

Over the last 4 years Vicky has focused on a number of gender initiatives and mentoring programs designed to help women transform and grow in confidence, assisting them to move forward in their careers with clarity and purpose.

Vicky is a full-engagement teacher and guide. More than a coach; she takes you on a personalised journey toward success and fulfilment, teaching you the tools you need to achieve an abundant future. After being in the room with Vicky, she is sure to leave individuals feeling energised and inspired to put their new learning and knowledge into practice.



Cherie Mulyono, CTA

PwC

Cherie is a Partner in the Financial Advisory practice at PwC specialising in Australian state taxes, is an Australian solicitor and a chartered tax advisor.

Cherie has over fourteen years of experience providing Australian tax services to multinational companies in various industry sectors. She specialises in Australian stamp duty and land tax, and has been involved in various domestic and international transactions and cross-border restructures.

Cherie has diverse experience, having worked on a 2 year secondment within PwC's network to the New York office assisting with tax and regulatory queries. Cherie is a Partner sponsor for Shine@PwC (employee network for the LGBTI community and allies), and is also involved in Cultural Connections@PwC (employee network for cultural diversity). Cherie is also a founding member of the Shine Women's Network, following the "Where are all the women?" research conducted by PwC and Pride in Diversity. Cherie was named as an Outstanding 50 LGBTI+ Leader in 2020.



Helena Papapostolou

Greenwoods & Herbert Smith Freehills

Helena is a Senior Associate at Greenwoods & Herbert Smith Freehills in Sydney. Helena specialises in providing high value indirect tax advice to clients in various industry sectors.

Helena holds a Bachelor of Commerce and a Bachelor of Laws from the University of New South Wales, where she has also completed a Master of Laws (specialising in Corporate, Commercial and Taxation Law).

Helena is admitted to practice as a lawyer in New South Wales, is a Member of the Tax Institute of Australia, the Law Society of New South Wales.

Helena was the winner of the 2020 Lawyers Weekly 30 under 30 Award for Taxation and the winner of the 2021 Tax Institute's Emerging Tax Star Award, recognising technical expertise and innovation in the profession and area of practice of which she is passionate.



Speaker profiles continued



Alison Stevenson, CTA

Matrix Norwest Taxation & Accounting

Alison has over 20 years industry experience working in taxation roles, with a primary focus on small business entities and succession planning and has a passion for assisting clients achieve their goals.

Alison is the CEO of Matrix Norwest, an integrated accounting, taxation and financial planning business, Alison leads a team of qualified professionals in delivering excellence through advice, incorporating strategy and compliance.

Alison believes in quality, integrated advice underpinned by strong relationships with clients and professional partners.

Alison is a CTA of The Tax Institute and is the current Deputy Chair of the NSW State Council. She is the winner of the 2021 Tax Adviser of the Year Award for the Respect – SME: 1-4 Partners Category.



Sarah Taylor

Australian Taxation Office

Sarah Taylor is an Assistant Commissioner in Integrated Compliance, leading the Complex Issues and Cases Program (CICP). Sarah leads teams which address complex cases across the ATO, to come to quicker and better resolutions for both the ATO and the client.

Sarah has 20 years of experience in taxation, with special focus on private group structures and international tax. Sarah also has significant experience in the private sector working in leadership roles with some of Australia's top professional firms.



Lauren Whelan, FTI

HLB Mann Judd

Lauren is a director who practices in tax compliance and consulting, specialising in tax issues facing multinationals. She joined HLB Mann Judd in 2012. Lauren has extensive experience in corporate taxation, advising businesses (both publicly and privately owned) across a range of industries including property, freight forwarding and waste management. In 2019 she was nominated as a finalist in the Young Leaders in Finance Awards.



Duncan Young

Lend Lease

Duncan Young is the Head of Workplace Health and Wellbeing at leading international property and infrastructure group Lendlease. He is a passionate advocate of the positive impact of workplaces on health, and helps 'corporate athletes' perform at their best. He believes that health is a journey and that small steps can lead to larger incremental change that help individuals to thrive, not just at work, but in life. His strategies and programs are research-based and grounded in the workplace, making them applicable in any environment and directly transferable between organisations.



Program continued

Time	Session	Speakers
8.00am – 8.30am	<i>Registration</i>	
8.30am – 8.40am	Opening & President's Welcome	Master of Ceremonies: Suzy Jacobs Cognitive Innovation Jerome Tse, CTA Vice President, The Tax Institute
8.40am – 9.15am	Keynote: Next-Level Leadership - Increase your capacity to create real change and generate extraordinary results in every aspect of your life. Personalise your Congress experience by completing the Expansive Thinking assessment - use it to identify limitations and uncover opportunities to take your leadership to the next level. Use the day to: <ul style="list-style-type: none">— RETHINK - goals, dreams, purpose, values— RESTRUCTURE - thoughts, feelings, actions— REWIRE - filters, beliefs, habits, rituals Apply the fundamentals of Expansive Thinking to take your career and business to the next level.	Suzy Jacobs Cognitive Innovation



Program continued

Time	Session	Speakers
9.15am – 10.15am	Session 1: How the pandemic can enhance our wellbeing The way we live, and work has changed radically over the past 18 months. We all want some kind of change in our lives, but there is a gap between what we want and what we actually do. We'll explore how positive change can result when we are forced to rethink how we live and work, and how small intentional choices can make a big difference over time. Key session take outs include: <ul style="list-style-type: none">– Discuss why optimism and mindset matters in times of uncertainty– Challenge the commonly held theory that all stress is bad– Investigate the fundamental pillars of wellbeing and why they are more critical than ever– Understand the importance of daily routine and habits to help foster normalcy and fulfillment.	Duncan Young Lend Lease
10.15am – 10.45am	<i>Morning tea</i>	
10.45am – 12.00pm	Session 2: Remote Working; Blessing or Burden? Employers, teams and individuals have all responded quickly to adapt to the requirements of the pandemic. In this session we'll explore what's worked, what hasn't and what could be the optimal next generation workplace model for all, including discussion on: <ul style="list-style-type: none">– New ways of working– Rethinking the workplace– Returning to the office– How to foster engagement, collaboration and culture when leading remote and hybrid teams– The flexible and connected workplace of the future.	Facilitator: Melanie Earl Deloitte Panel Members: Robyn Howard Johnson Winter & Slattery Alison Stevenson, CTA Matrix Norwest Taxation & Accounting Sarah Taylor Australian Taxation Office



Program continued

Time	Session	Speakers
12.00pm – 1.00pm	Session 3: Leaving the ladders down; nurturing the leaders of tomorrow Have the rules changed? What's different in a post-covid world? In this session, we'll explore: <ul style="list-style-type: none">– Remaining visible, post COVID– Mentoring, sponsoring and supporting future leaders – practical tips on what really works– Helping women become leaders– Finding opportunities and defining career paths– Supporting women past the senior manager level.	Facilitator: Jane Holliday Clayton Utz CareerGrow.Coach Panel Members: Kirsten Fish Australian Taxation Office Helena Papapostolou Greenwoods & Herbert Smith Freehills Lauren Whelan, FTI HLB Mann Judd
1.00pm – 2.00pm	Lunch	
2.00pm – 3.00pm	Session 4: Diversity through a different lens It's well established that fostering inclusivity and a sense of belonging in the workplace contributes to improved business outcomes and the bottom line. Stronger teamwork, a positive company image and improved retention, all contribute to increased productivity. In this session, we'll provide insight into how to create psychologically safe workspaces to enable the many and varied aspects of diversity, including: <ul style="list-style-type: none">– Surface level: Age, physical capabilities, race & ethnicity, gender– Deeper level: Personality, attitudes, values & beliefs, diverse gender & sexual orientation, mental health & wellbeing, and family situations.	Facilitator: Ian Bennett PwC Panel Members: Dr Maria Bhatti Western Sydney University Nicole Bradley Grant Thornton Cherie Mulyono, CTA PwC



Program continued

Time	Session	Speakers
3.00pm – 3.15pm	<i>Afternoon tea</i>	
3.15pm – 4.15pm	Session 5: Redefining success The pandemic has led us to reconsider what's important and how we may set our personal goals and aspirations. There's now an opportunity to realign ourselves to a more balanced measure of success. In this session, we'll explore: <ul style="list-style-type: none">– What do we really value?– How do we define success on our terms?– What are better measures of success?– How can you enable a balanced approach to achieving success?– How to create healthy boundaries so you can do more of what matters most.	Vicky Jones The Element Coach
4.15pm – 5.00pm	Congress Close Next-Level Leadership - Increase your capacity to create real change and generate extraordinary results in every aspect of your life. In this interactive session over a glass of bubbles, Suzy will draw together and hear the shared challenges and opportunities identified during the day; ensuring you are equipped and empowered to achieve extraordinary change and results in every facet of your life.	Suzy Jacobs Cognitive Innovation

Venue

Crown Sydney

1 Barangaroo Avenue, Barangaroo
Sydney, NSW, 2000
Telephone: 02 8871 7188

A bespoke hotel experience curated to the very detail.

Crown Sydney offers uncompromising design that captures the essence of its harbour side setting, highly intuitive personalised service, and the finest dining and facilities unlike anything Sydney has seen before.

Located in the bustling precinct of Barangaroo, connected to sprawling parklands, laneway bars, beautiful public artworks and bay views of Sydney. To book accommodation at the Crown Sydney [click here](#).

Getting here

Crown Sydney is centrally located along the Barangaroo waterfront, yet still in close proximity to the heart of Sydney. Although parking is limited at Crown Sydney, it is easily accessible by public transportation, and we invite you to discover your most convenient way to visit below.

Train

The train is a convenient way to get to Crown Sydney. The closest train station is the Wynyard stop, a 9 minute walk to Crown Sydney.

Light Rail

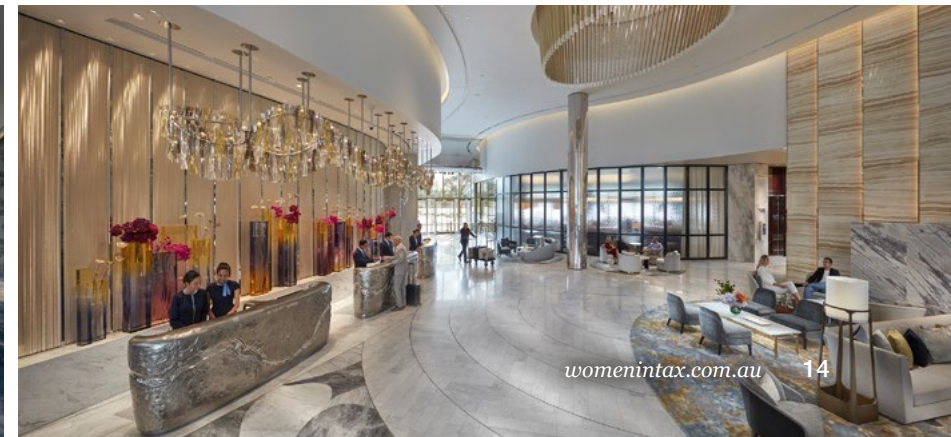
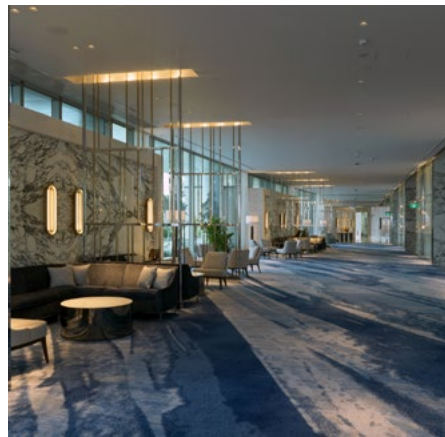
As parking is limited at Crown Sydney, taking the light rail is a convenient transport option. The closest light rail stop is the Bridge Street stop, where the L2 and L3 run. This stop is an 11 minute walk to Crown Sydney.

Bus

The bus service operate 7 days a week and is a fast and effective way to get to Crown Sydney. The closest stop is Barangaroo South on Hickson Rd, which is a 3 minute walk to Crown Sydney.

Ferry

The ferry service operate 7 days a week from Circular Quay and stops at wharves a few minutes' from Crown Sydney. The nearest ferry terminal is at Barangaroo wharf, which is a 5 minute walk to Crown Sydney.





Event information

Registration options and inclusions

	Online access to presentations and technical papers	Morning/ Afternoon tea/ Congress lunches	How to register
A Full Congress Face-to-face registration This registration option entitles one delegate to attend the entire event in-person.	✓	✓	Register online or complete the form included in this brochure.
B Full Congress Online registration This registration option entitles one delegate to attend the entire event virtually.	✓		Register online or complete the form included in this brochure.

Please note: Registration fees do not include travel, accommodation, hotel breakfasts or hotel incidentals.



Register online at taxinstitute.com.au/22WITNC

Discounts

Early bird registration

All registrations received and paid for on or before Friday 14 January 2022 will be entitled to an early bird discount.

Group discount

Purchase four full registrations (early bird or standard) and receive a fifth full registration for FREE. The free fifth registration must be of equal or of less value to the four paid registrations.

This offer cannot be redeemed in conjunction with any other promotional offer or code.

All attendees must be from the same firm and all registration forms must be submitted together. For further information please contact National Events Team on 1300 733 842 or at nationalevents@taxinstitute.com.au.

Hybrid event

As a hybrid face-to-face and online event, this event will be accessible to all delegates via our dedicated Delegate Portal. Program information, materials (technical papers and presentations), evaluation

forms and more will be available via The Tax Institute's virtual event platform. All delegates are encouraged to access the platform prior to the event. Materials and presentation will be available on the portal to all participating delegates approximately five days before the event. Delegates will receive instructions on accessing the portal by email.

Delegate list

A delegate list will be included on the Delegate Portal to assist with networking. Please indicate on the registration form if you do not want your name included on the list.

Confirmation of registration

A confirmation letter and tax invoice will be sent via email (please note you will receive two separate emails).

CPD accreditation

Attendance at the congress counts for 6.5 hours of Continuing Professional Development Accreditation (CPD) with The Tax Institute.

Dress code

Business attire is advised for the duration of the congress program.

Special dietary requirements

Please indicate any special dietary requirements on the registration form.



COVID-19 Event Guidelines

At The Tax Institute, the health and wellbeing of our members, delegates and employees is our top priority. Whilst returning to face-to-face events, we continue to actively monitor the situation regarding COVID-19 and follow the latest advice and guidelines issued by the Department of Health, the World Health Organisation and relevant State authorities. [Please click here](#) for a summary of the measures The Tax Institute has put in place to ensure the safety of attendees at our face-to-face events, along with helpful links to assist you in preparing for your attendance at them.

Please note, final implementation of any of these measures is subject to Federal and State Government requirements at the time of each event.

Contact tracing

We will keep a record of attendance for all meetings and events of The Tax Institute and will use this data for contact tracing purposes if necessary. For more information on how we will use the data that will be collected, and your rights in relation to that information, please see our Privacy Policy.

Cancellation Policy

The Tax Institute reserves the right to alter, amend or cancel all or any of the arrangements contained in the program.

Should a face-to-face event be cancelled due to an event beyond The Tax Institute's reasonable control including 'an act of god', 'pandemic', 'health-related event' or 'government requirements', we will endeavour to transition to an online format to deliver the event. If there is a difference in price, a credit will be provided to delegates to be used at a future event.

If a registered delegate is unable to attend as a result of a diagnosis of COVID-19 or they are experiencing symptoms of COVID-19, a full refund will be offered with the provision that a medical certificate is produced explaining the diagnosis or a summary of the appropriate action to be taken i.e. a COVID-19 test and medical advice.

If a registered delegate is unable to attend a face-to-face event as a result of interstate border closures or they reside in or visited a COVID-19 hotspot, we will endeavour to transition the registration to an online registration for the event. If there is a difference in

price a credit will be provided to delegates to be used at a future event. If a delegate does not wish to transition their registration to the alternate online event, a full refund/credit will be provided.

It is a condition of acceptance of registration that an administration fee of 20% of the registration fee be charged for cancellation if you can no longer attend the event. Cancellations must be received in writing by The Tax Institute five working days prior to the event. No refund will be given for cancellations received within five working days of the event.

A replacement may be nominated. If the replacement is not a member, the non-member registration fee will apply. CPD hours will be allocated to the designated attendee.

The Tax Institute cannot accept responsibility for delegates' late transport arrivals or non-arrivals due to delays.

Privacy

We take your privacy seriously, and our policy can be viewed at: taxinstitute.com.au/go/footer/privacy

For further information regarding this event, please contact the National Events Team on 1300 733 842 or email nationalevents@taxinstitute.com.au

For registration enquiries, please contact customeradmin@taxinstitute.com.au





THE TAX INSTITUTE

Women in Tax National Congress 2022

Registration form

Women in Tax National Congress 2022

42105 | WD

A tax invoice and confirmation letter will be sent on receipt of your registration. Please photocopy for additional delegates and retain original copy for your records. All prices quoted are in Australian dollars and include GST where applicable. ABN 45 008 392 372.

1 Registration

A Face-to-face registration

	Member	New member*	Non-member
Early bird registration Received on or before 14 January 2022	<input type="checkbox"/> \$750	<input type="checkbox"/> \$1090	<input type="checkbox"/> \$1050
Standard registration Received after 14 January 2022	<input type="checkbox"/> \$950	<input type="checkbox"/> \$1290	<input type="checkbox"/> \$1250

☐ I acknowledge that I will receive electronic access to the available papers and presentations through The Tax Institute CPD app.

B Online registration

	Member	New member*	Non-member
Early bird registration Received on or before 14 January 2022	<input type="checkbox"/> \$600	<input type="checkbox"/> \$940	<input type="checkbox"/> \$900
Standard registration Received after 14 January 2022	<input type="checkbox"/> \$800	<input type="checkbox"/> \$1140	<input type="checkbox"/> \$1110

☐ I acknowledge that I will receive electronic access to the available papers and presentations through The Tax Institute CPD app.

*Become a member and save!

Not a member of The Tax Institute yet? Sign up for membership along with your event registration and save with:

- up to 50% off membership to 30 June 2022
- member-only prices to this and future events
- free access to member-only technical resources.

Find out more about membership at info.taxinstitute.com.au/membership.

I hereby apply for membership of The Tax Institute and declare that I am a person of good fame, integrity and character. I agree to be bound by the Constitution of The Tax Institute.

Signature:

Date of signature:

Promotional code:

2 Delegate / group co-ordinator contact details

Member no.:

If your member details are up-to-date, you can skip this section.

Title:

☐ Mr ☐ Mrs ☐ Miss ☐ Ms ☐ Other (please specify)

First name:

Last name:

Position:

Company:

Address:

Suburb:

State:

Postcode:

Telephone:

Fax:

Mobile:

Email:

Dietary requirements:

☐ Please tick this box if you do not wish your name to be included on the delegate list provided to all attendees for networking purposes.

3 Payment summary

Total payable

\$

*Please note: The Tax Institute cannot accept responsibility for delegates' late flight arrivals. Transfer costs are non-refundable and non-transferable.

4 Payment method

Please note: all registration payments must be made prior to the event, unless other arrangements have been made with The Tax Institute.

☐ **Cheque payable to The Tax Institute** (in Australian dollars)

☐ **Credit card** \$ Card type: ☐ AMEX ☐ Visa ☐ MasterCard ☐ Diners

Name on card:

Card no.: Expiry date:

Cardholder's signature:

For further information regarding this event, please contact the National Events Team on 1300 733 842 or email nationalevents@taxinstitute.com.au

For registration enquiries, please contact customeradmin@taxinstitute.com.au

Collection notice

The Tax Institute (TTI) complies with its obligations under the Privacy Act 1988 (Cth) with respect to how it handles personal information. For information on how TTI collects, uses, holds and discloses personal information, please see its privacy policy at www.taxinstitute.com.au. [You can also request TTI's consultants to provide you with a copy of TTI Privacy Policy.] By submitting your application to TTI, you confirm that you have read TTI's Privacy Policy and you consent to your personal information being collected, used and held by TTI and disclosed to third parties in accordance with TTI's Privacy Policy.

TO REGISTER

📄 **Online**
taxinstitute.com.au/22WITNC

✉ **Mail**
L37, 100 Miller Street, North Sydney NSW 2060

@ **Email**
customeradmin@taxinstitute.com.au

☎ **Fax**
02 8223 0077



THE TAX INSTITUTE

Thank you

The Tax Institute gratefully acknowledges the generous assistance of members of the Women in Tax National Congress Organising Committee:

Kathryn Bertram, FTI, Johnson Winter & Slattery
Morag Ingham, CTA, Grant Thornton
Annette Morgan, CTA, Curtin University
Rae Ni Corraidh, CTA, Knowledge Shop
Jacquii Reeves, CTA, Business Depot

Georgie Rogers, ATI, MGI Joyce Dickson
Louise Van Wyk, FTI, Greenwoods & Herbert Smith
Freehills Pty Ltd
Mariana Von Lucken, CTA, HLB Mann Judd

Join the conversation

-  facebook.com/thetaxinstitute
-  linkedin.com/company/the-tax-institute
-  twitter.com/taxinstituteoz
-  insights.taxinstitute.com.au

L37, 100 Miller Street
North Sydney NSW 2060

ABN 45 008 392 372

Tel 02 8223 0000

Fax 02 8223 0077

Email customeradmin@taxinstitute.com.au

womenintax.com.au